

# 1965/2 The Thames Ditton Crucifixion

Height 12 feet

Portland Stone (5 blocks weighing 2½ tons)

Carved in situ at The Church of Our Lady of Lourdes, Hampton Court Way

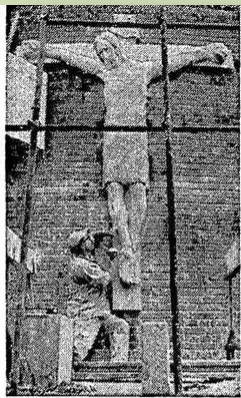
## References:

The Illustrated Weekly of India 14th August 1964: "He works on a 30ft platform, and a polythene cage protects him from the weather. "The light is excellent" he says, "but on a sunny day it can become terribly hot."



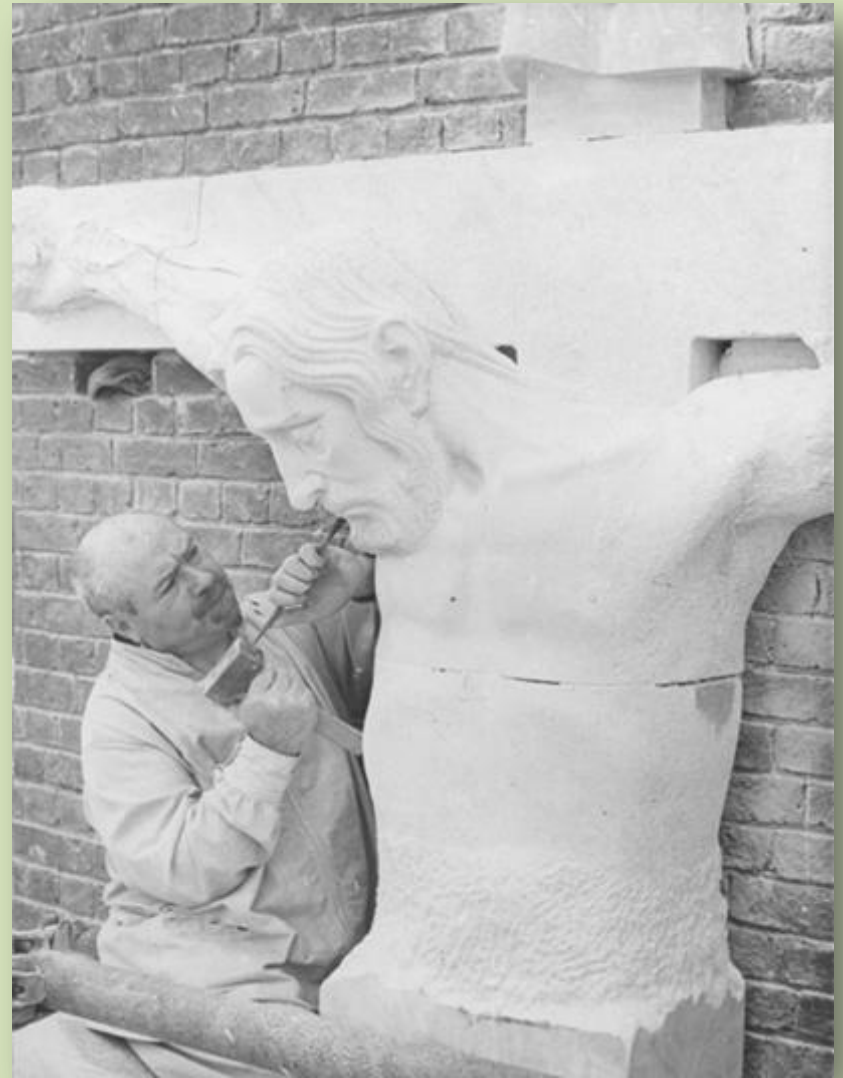


The stone blocks are installed prior to carving



The Times 26/7/1965

Mr. David McFall carving a 12ft. high statue of Christ for the new Roman Catholic Church of Our Lady of Lourdes at Thames Ditton, Surrey.



McFall at work carving in situ

The finished work (left) with preliminary studies (below right)

